



MEPLA PRO

from Version 2025

**Installation and license
activation**

February 2025

© All rights reserved. No part of this documentation, the associated software and the other components of the described product may be reprinted, reproduced, translated into another language or stored by electromagnetic, optical, mechanical or other means without written permission from Mepla Software GmbH. This documentation and the associated software have been prepared with great care. Nevertheless, errors are not excluded. Mepla Software GmbH points out that no liability claims can be asserted for errors within the documentation or programs by the user.

Mepla Software GmbH reserves the right to change the documentation from time to time without having to inform the user.

MEPLA is a protected brand of Mepla Software GmbH. All other brand and product names mentioned in this documentation are trade names, services, trademarks and company names are usually protected by their owner.

Table of Contents

1 Licenses.....	4
1.2 Definitions.....	4
2 Local installation.....	5
2.1 Activating your license using the ticket.....	5
2.2 Use local computers as a server.....	7
3 Server-Installation (“Floating”).....	8
3.1 Installation of dependencies.....	8
3.2 Installation and Setup.....	8
3.3 Activation of licenses on the server.....	9
3.4 Define server address in the client.....	9
3.5 Backups.....	10
4 Removal of already activated licenses.....	10

1 Licenses

After purchasing MEPLA PRO, you will receive a ticket, this guide and a link to the installation file to your email address. MEPLA PRO is installed on any computer on which it is to be used. A central installation on a server is not recommended.

The installation can also be done on a high-performance computer (HLC) that is accessed via remote access. For this purpose, the installation must be carried out directly on the HLC.

0.1 Definitions

Ticket

The ticket is the code you receive when purchasing MEPLA PRO. This code allows you to retrieve the purchased licenses. Keep your ticket carefully.

Lizenz

The license authorises you to use one or more instances of the software “MEPLA PRO” of a specific version (except annual subscriptions), in the different versions “STANDARD”, “ADVANCED” or “COMPLETE”. With the ticket, the licenses are retrieved from the web depot and loaded locally or on a server into a container (see below). If you have purchased a license with several seats (“floating”), the seats can be divided and distributed to several containers. The licenses are bound to the respective computer and cannot be disabled again.

Container

The container is the local location of your licenses. The CodeMeter Runtime uses it to validate its licenses and provide for MEPLA PRO. If you have not used any software from us yet, a container will be created automatically for you when retrieving the licenses.

WebDepot

The WebDepot is the service that allows you to retrieve your licenses using the ticket. You can reach the WebDepot [here](#).

1 Local installation

Download the installation file and keep your ticket ready, you will need it later.

Note:

If you have purchased a license with multiple seats, it should be installed on a license server. Read section 2.

It is not absolutely necessary to provide a dedicated license server. Each client computer can act as a license server, but it must be ensured that it is available to the other clients at any time. Note Section 1.2.

Start the installation program. After you have agreed to our end-user license agreement, dependencies are checked and necessary additional software is installed. These include:

1. .NET 8.0 Runtime: The program environment developed by Microsoft, with which MEPLA PRO was realized.
2. Visual C++ Runtime 2015-2022: The program environment developed by Microsoft, with which the computing core is operated.
3. CodeMeter Runtime: license management environment of [Wibu Systems](#).

During installation, the sub-installations of these program packages are called. You must agree to the end user license agreements of all installation programs and install the third-party software so that you can use MEPLA PRO.

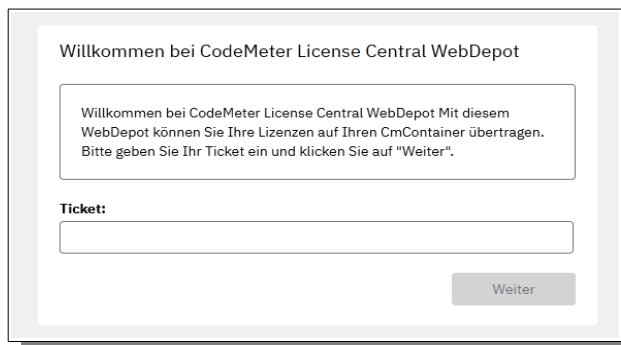
The installation wizard will guide you through the further installation. After completion of the installation, you should restart your computer.

1.1 Activating your license using the ticket

After a (recommended) computer restart, visit our WebDepot at:

<https://license.mepla-software.de>. The window appears as shown on the right.

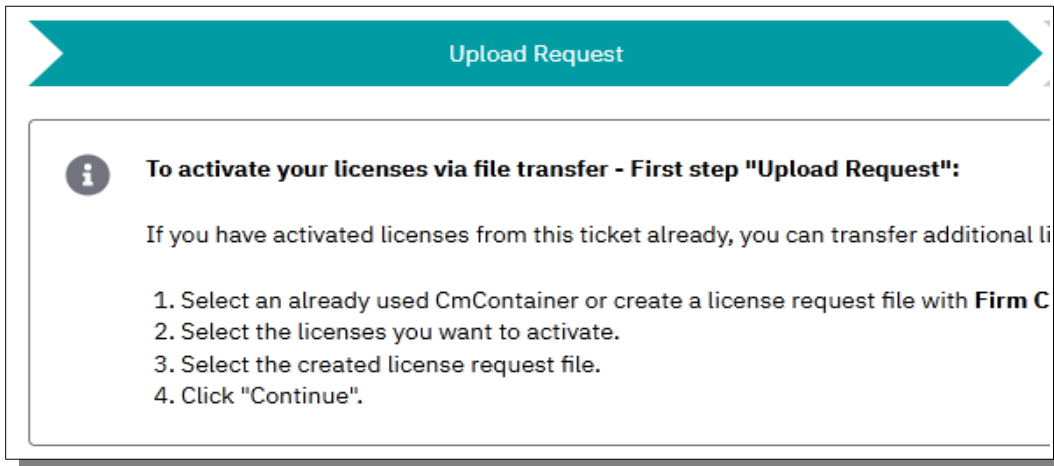
Enter your ticket and click *Next*.



The screenshot shows a web browser window titled "Willkommen bei CodeMeter License Central WebDepot". The main content area contains the following text: "Willkommen bei CodeMeter License Central WebDepot Mit diesem WebDepot können Sie Ihre Lizenzen auf Ihren CmContainer übertragen. Bitte geben Sie Ihr Ticket ein und klicken Sie auf 'Weiter'." Below this text is a label "Ticket:" followed by an empty text input field. At the bottom right of the form area is a button labeled "Weiter".

Important:

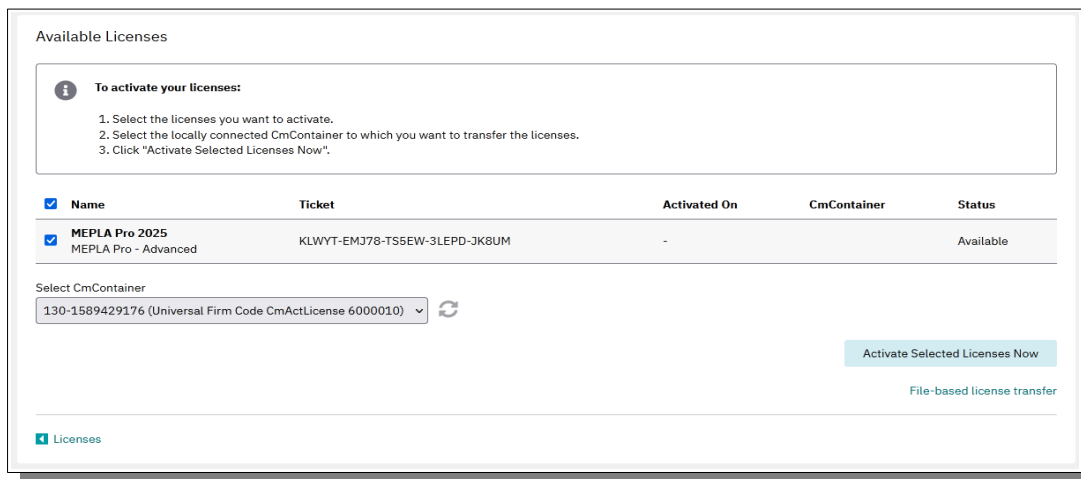
In some cases, a *File Transfer* is shown:



In the lower section of the window, under the *Start Activation Now* button, click *Direct Licence Transfer* before proceeding!

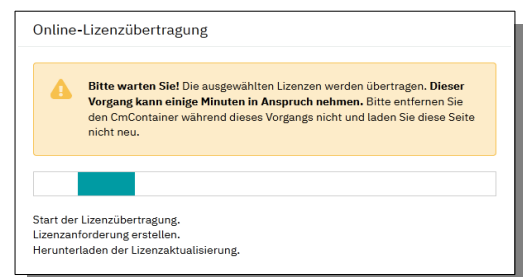
An overview of the available licenses appears. Click on *Activate licenses*:

Select the licenses you want to activate. If you already own a CmContainer with the number 6002635, select it. Otherwise, a new container will be created automatically. Click on *Activate Selected Licenses Now*:



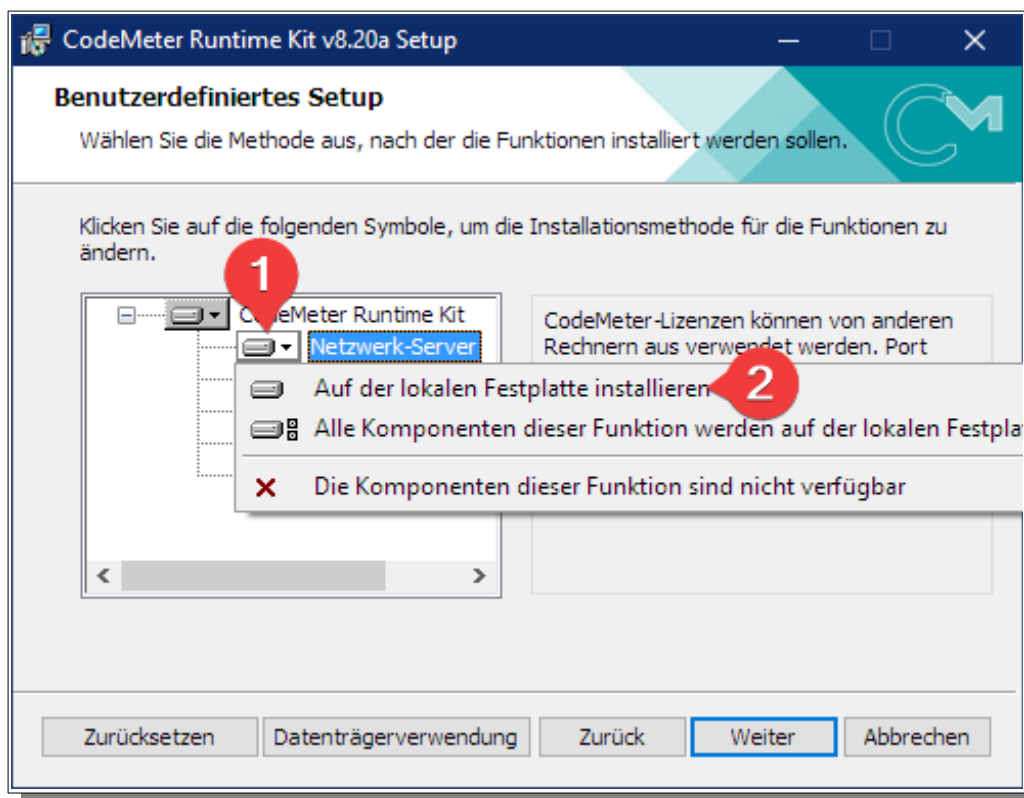
This process must not be stopped!

If the process has been successfully completed, you can leave the license portal and start MEPLA PRO. It is advised to restart the computer.



1.2 Use local computers as a server

To use the local computer as a server for your licenses, the Wibu license server must be installed. In the installation of MEPLA PRO during the CodeMeter Runtime installation, the component *license server* (1) must be selected. Select *Install On Local Hard Drive* and continue the installation as usual. This option is enabled by default and can be switched off for computers that do not need this functionality.



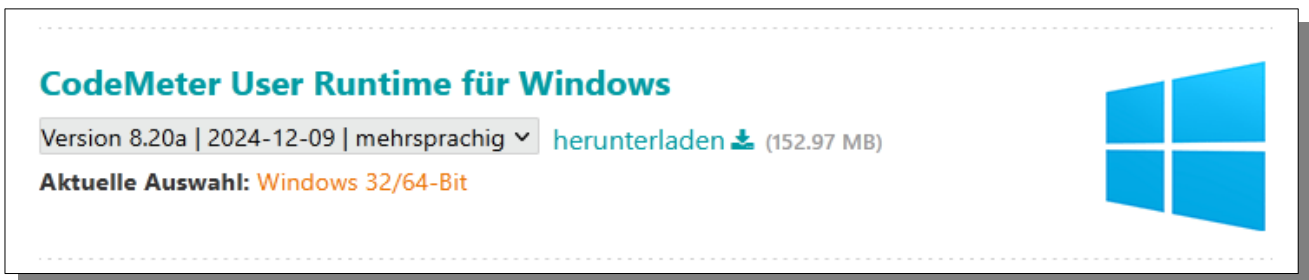
After the installation, you must adjust the settings for server operation in the CodeMeter WebAdmin. You can find a guide in 2.2.

2 Server-Installation (“Floating”)

MEPLA PRO itself is not necessary on a license server. The licenses are managed by the CodeMeter User Runtime which allows you to access them throughout the network.

2.1 Installation of dependencies

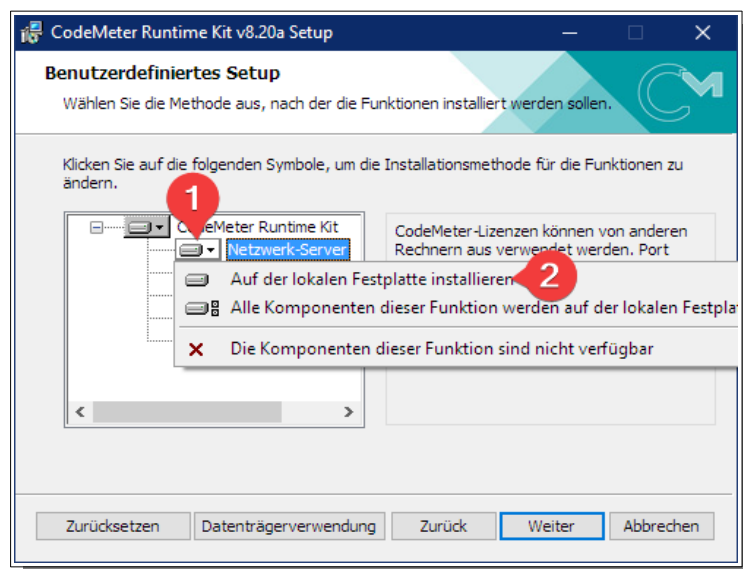
Visit the [Wibu download page](#) and download the CodeMeter User Runtime for Windows.



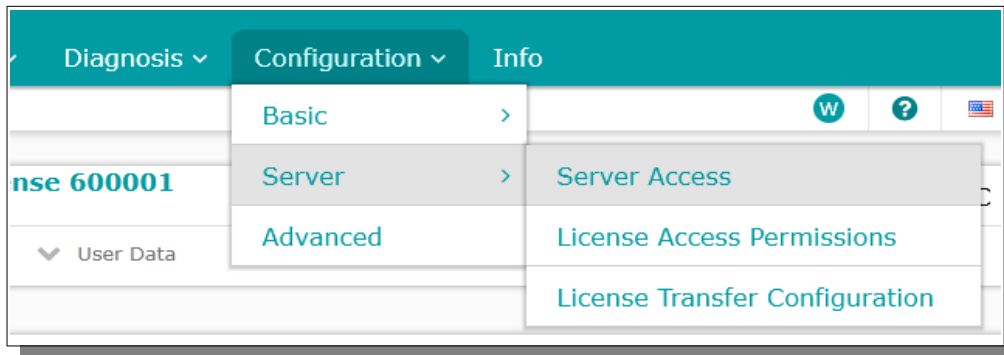
If you have a Linux server, you can also download the CodeMeter User Runtime for Linux, this installation type is not officially supported.

2.2 Installation and Setup

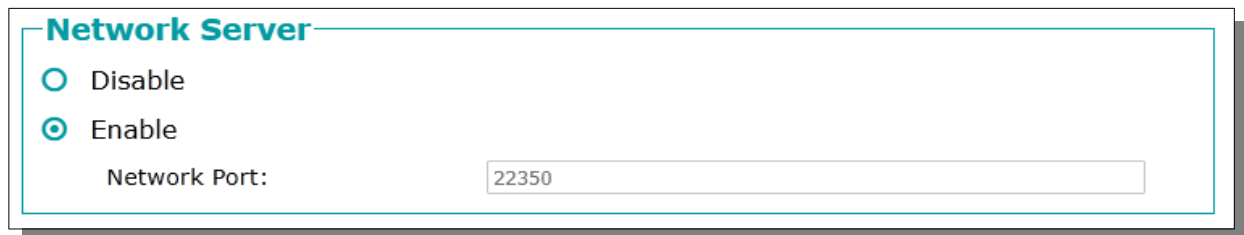
Make sure to select the *Network-Server* (1)(2) component during installation:



After successful completion of the installation, visit the user interface installed on your server under <http://localhost:22350/dashboard.html> and navigate to *Configuration* → *Server* → *Server access*:



Now enable the *Network Server* option:



MEPLA PRO must be installed separately on all clients. Please note the procedure from 1. The runtime on the clients will automatically locate the license server and borrow corresponding licenses from it. If the set up license server is not automatically detected, follow the instructions in 2.4.

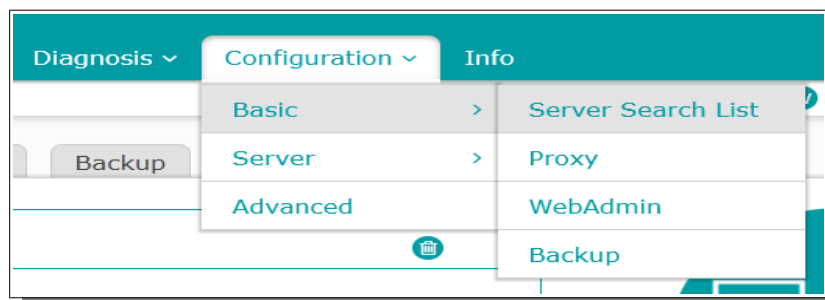
2.3 Activation of licenses on the server

The server license is activated in the same way as in section 1.1. Visit the WebDepot, enter your ticket and transfer your licenses to a container on your server.

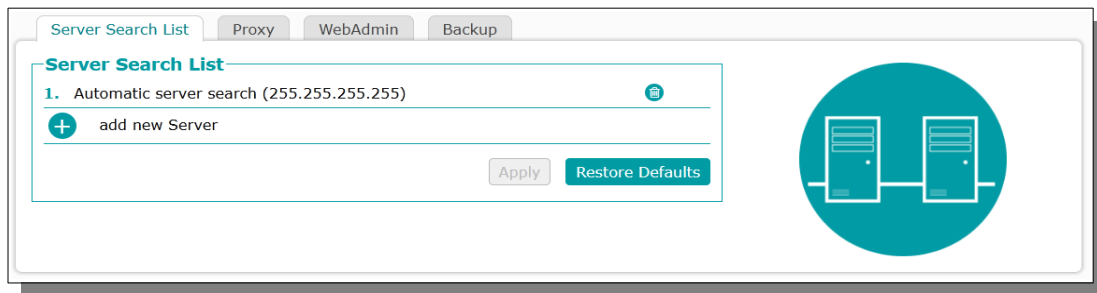
2.4 Define server address in the client

In some cases, where a lot of services are running on the network, the license server might not be discovered reliably. In that case, visit

<http://localhost:22350/dashboard.html> on your clients and navigate to *Configuration* → *Basic* to *Server Search List*:



The following settings appear:



1. Click on *add new Server*
2. Enter the network address of the license server
3. Confirm using *Add* and then *Apply*

In *Configuration* → *Basic*, you can make different settings via the Proxy tab if your connection has to be built up via a proxy.

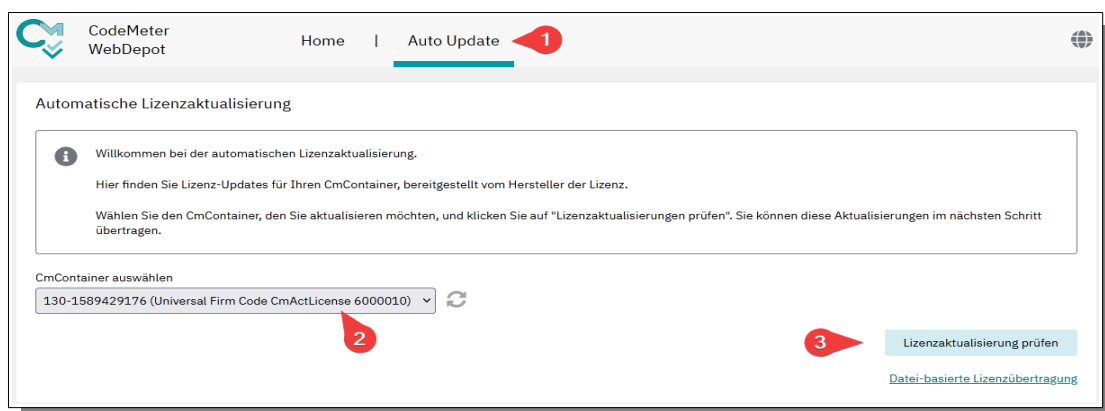
2.5 Backups

By default, the CodeMeter WebAdmin © has regular backups activated. You can locate the path of the backups by navigating to *Configuration* → *Basic* → *Backup*.

3 Removal of already activated licenses

In order to be able to move already activated licenses from a computer/server to new hardware, you must return the already activated license.

To do this, you must first submit a request to support@mepla.net. We will release the deactivation of your license. Then call license portal on license.mepla-software.de and navigate to *Auto Update* (1):



If not yet done, select the container number 6002635 (2) and confirm the update process with *Check license updates* (3).

In the next window, you will see that there are updates available.

Verfügbare automatische Lizenzaktualisierungen

So übertragen Sie Ihre automatischen Lizenzaktualisierungen auf CmContainer:

1. Stellen Sie sicher, dass der CmContainer mit Serial **130-1589429176** mit diesem Rechner verbunden ist. Wenn dieser CmContainer nicht mit diesem Rechner verbunden ist, verbinden Sie ihn jetzt und klicken Sie auf "Erneut nach CmContainern suchen".
2. Lizenzaktualisierungen jetzt übertragen.

Name	Ticket	Aktiviert Am	CmContainer	Status
MEPLA Pro 2025		2025-02-22 12:26:39	● 130-1589429176	Auto Update

1 Lizenzaktualisierungen jetzt übertragen

Datei-basierte Lizenzübertragung

Click on *Move licenses now* (1).

This process must not be stopped!

Once the process has been successfully completed, please notify us so that we can provide you with a new ticket for activation on another computer.

Online-Lizenzübertragung

Bitte warten Sie! Die ausgewählten Lizenzen werden übertragen. **Dieser Vorgang kann einige Minuten in Anspruch nehmen.** Bitte entfernen Sie den CmContainer während dieses Vorgangs nicht und laden Sie diese Seite nicht neu.

Start der Lizenzübertragung.
Lizenzanforderung erstellen.
Herunterladen der Lizenzaktualisierung.

The old ticket loses its validity with the deactivation. No more licenses can be activated.